

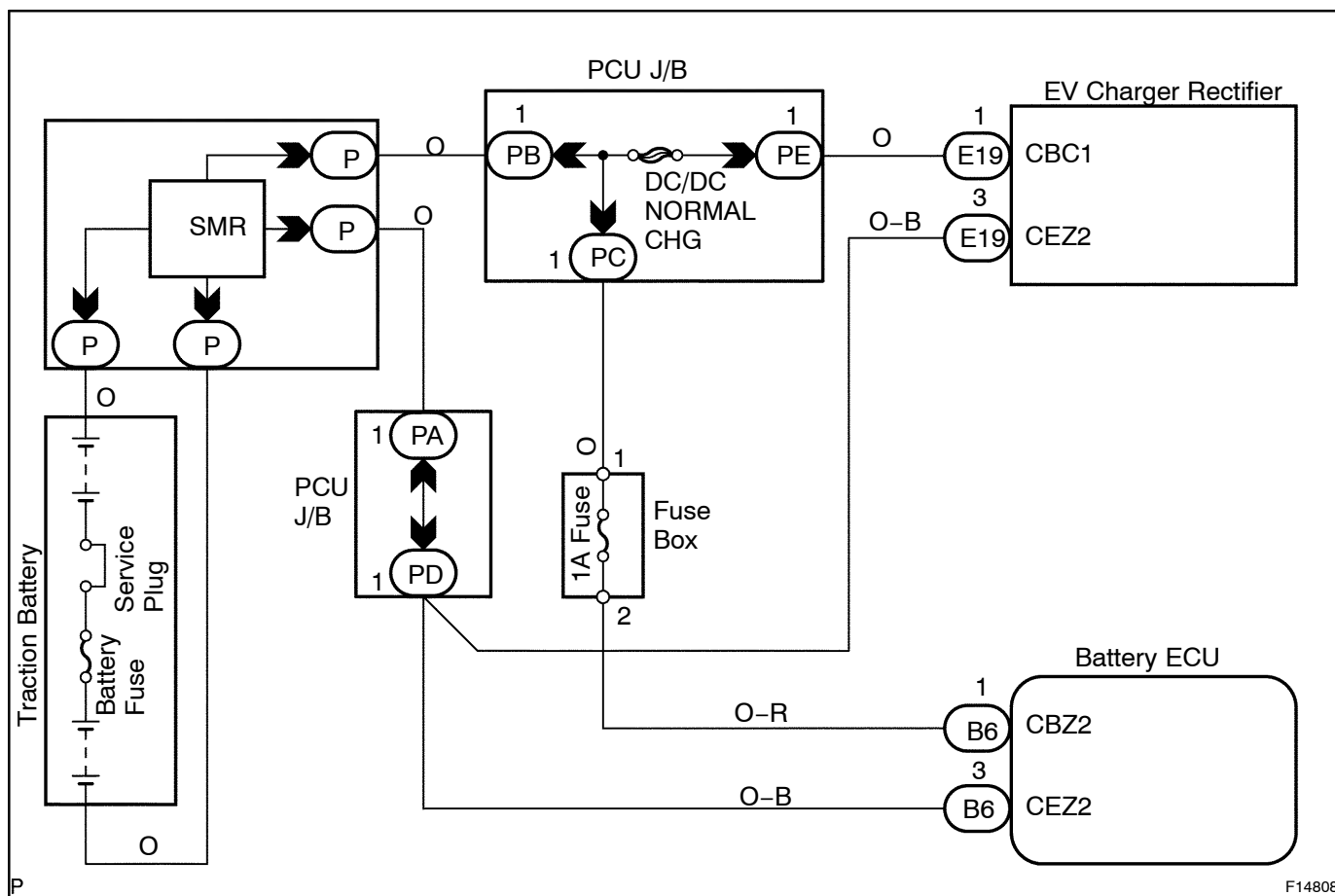
DTC	C2911/101	Abnormally High Voltage During Battery Charge
------------	------------------	--

CIRCUIT DESCRIPTION

When the voltage of the traction battery has become more than 400 V while battery charging, the battery ECU records this DTC. At the same time, the battery ECU stops charging and displays ERR for 30 seconds on the battery charge panel.

DTC No.	DTC Detection Condition	Trouble Area
C2911/101	<ul style="list-style-type: none"> • Open DC/DC NORMAL CHG fuse • System main relay malfunction • Open in high voltage wire harness 	<ul style="list-style-type: none"> • DC/DC NORMAL CHG fuse • System main relay (SMR) • High voltage wire harness

WIRING DIAGRAM



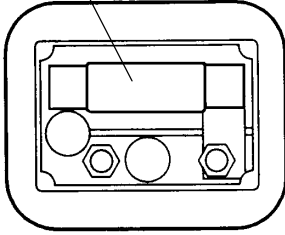
INSPECTION PROCEDURE

CAUTION:

To avoid receiving an electrical shock, observe PRECAUTION on page [DI-133](#).

1 Check battery fuse.

Battery Fuse



I06594

PREPARATION:

Remove the battery fuse.

CHECK:

Check the continuity of the battery fuse.

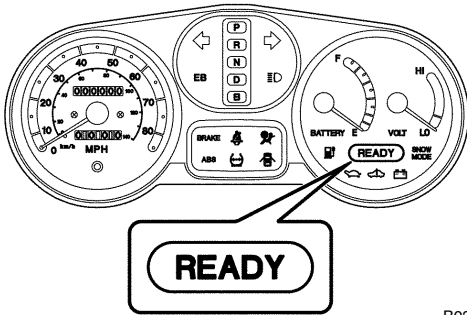
OK:

Continuity.

NG

Replace battery fuse.

OK

2 Check system main relay (SMR).

B03059

PREPARATION:

(a) Turn the motor switch ON.

(b) Turn the motor switch START.

CHECK:

Check that the READY indicator lights up.

OK:

READY indicator lights up.

NG

Check EV control system (See page [DI-3](#)).

OK

**3 Check harness and connector and terminal in high voltage circuit
(See page [IN-28](#)).**

NG

Repair or replace harness, connector or terminal.

OK

Check and replace battery ECU.