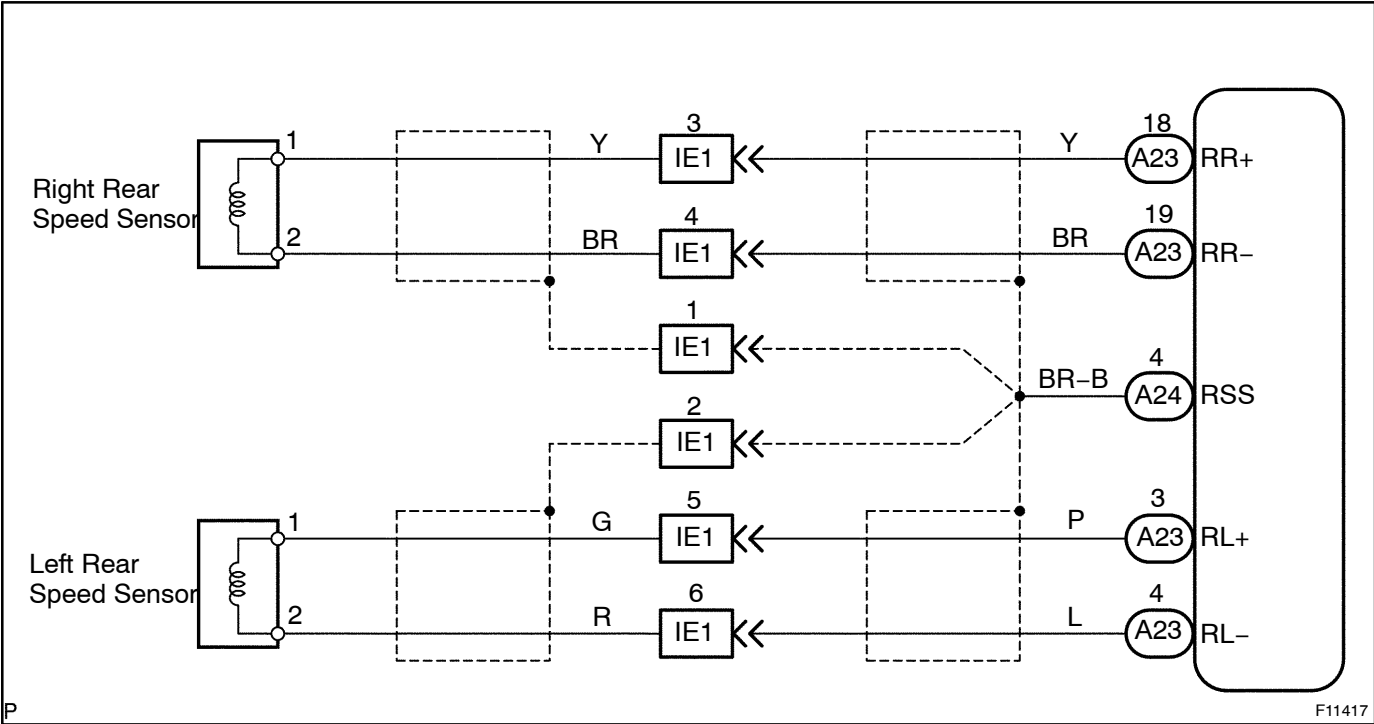


DTC	37	Rear Speed Sensor Rotors Faulty
-----	----	---------------------------------

CIRCUIT DESCRIPTION

DTC No.	DTC Detecting Condition	Trouble Area
37	With front wheels stationary and rear wheels rotating is turned at 20 km/h (12 mph) for 10 sec., motor switch is turned ON then OFF 8 times in succession	<ul style="list-style-type: none">• Right rear, left rear speed sensor• Rear speed sensor circuit• ABS ECU

WIRING DIAGRAM



INSPECTION PROCEDURE

1	Check rear speed sensor (See page DI-245).
---	---

NG

Replace rear speed sensor.

OK

2	Check for open or short circuit in harness and connector between speed sensor and ABS ECU (See page IN-28).
---	--

NG

Repair or replace harness or connector.

OK

Check and replace ABS ECU.